

## October

<b>Monday</b>	<b>2</b>	Queen's Birthday Holiday
<b>Tuesday</b>	<b>3</b>	START OF TERM 4 - <i>Term 4 Fees Due</i>
<b>Wednesday</b>	<b>4</b>	Year 9 Camp (Oct 4 <sup>th</sup> to 7 <sup>th</sup> )
<b>Saturday</b>	<b>7</b>	Working Bee
<b>Tuesday</b>	<b>10</b>	Visiting Japanese Group (10 <sup>th</sup> to 21 <sup>st</sup> )
<b>Wednesday</b>	<b>11</b>	Year 4 Camp (11 <sup>th</sup> to 13 <sup>th</sup> )
<b>Monday</b>	<b>16</b>	Student Free Day (except early learners) Vacation Care Open
<b>Wednesday</b>	<b>18</b>	Middle School Information Night
<b>Monday</b>	<b>23</b>	Christian Book Fair (Oct 23 <sup>rd</sup> to 27 <sup>th</sup> )
<b>Thursday</b>	<b>26</b>	Senior School Speech Night



## November

<b>Wednesday</b>	<b>1</b>	Year 4 Instrumental Music Afternoon
<b>Thursday</b>	<b>2</b>	Parent Volunteer Morning Tea
<b>Monday</b>	<b>6</b>	Whole School Assembly
<b>Thursday</b>	<b>9</b>	Middle School Presentation Night
<b>Friday</b>	<b>10</b>	Year 7 Vaccinations NCC Sports Award Evening
<b>Saturday</b>	<b>11</b>	Working Bee
<b>Wednesday</b>	<b>15</b>	Year 12 Graduation Dinner
<b>Thursday</b>	<b>16</b>	Prep to Year 3 Celebration Night Primary SCISSA Gala Day Four
<b>Friday</b>	<b>17</b>	Year 12 Valedictory Service Year 12 FINISH
<b>Tuesday</b>	<b>21</b>	Year 9 Graduation Service (morning)
<b>Thursday</b>	<b>23</b>	Year 4 to Year 6 Presentation Night
<b>Friday</b>	<b>24</b>	Prep (2018) Orientation Morning Year 8 Leadership Walk YEARS 10 & 11 FINISH
<b>Monday</b>	<b>27</b>	Middle School Activity Day One
<b>Tuesday</b>	<b>28</b>	Middle School Activity Day Two YEARS 7, 8 & 9 FINISH
<b>Wednesday</b>	<b>29</b>	Middle School Orientation Morning PREP to YEAR 6 FINISH

## December

<b>Thursday</b>	<b>7</b>	NCC early learners Concert Vacation Care (Nov 30 <sup>th</sup> to Dec 22 <sup>nd</sup> )
<b>Friday</b>	<b>22</b>	NCC early learners close

Dates are correct at time of print; however, changes may occur. Please check the College weekly update, NCC App and Calendar on website for updates and events.

### NAMBOUR CHRISTIAN COLLEGE

**COLLEGE ADDRESS** 2 McKenzie Road Woombye QLD 4559  
PO Box 500 Nambour QLD 4560

**PHONE** 07 5451 3333

**EMAIL** [info@ncc.qld.edu.au](mailto:info@ncc.qld.edu.au)

**WEB** [ncc.qld.edu.au](http://ncc.qld.edu.au)

**ABSENTEE LINES** (Middle & Senior) 5451 3398

(Primary School) 5451 3399

**ACN** 106 434 511

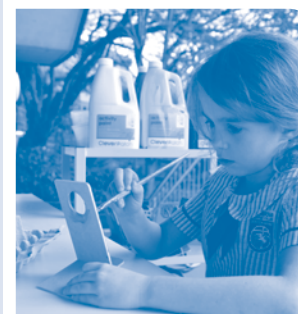
**Cricos Provider No.** 01461G



**NAMBOUR**  
CHRISTIAN COLLEGE

# Calendar 2017

*Sow to Harvest*



## January

<b>Monday</b>	<b>9</b>	NCC early learners Open Vacation Care (9 <sup>th</sup> - 20 <sup>th</sup> )
<b>Wednesday</b>	<b>18</b>	Family Administration Day (7am - 6pm)
<b>Monday</b>	<b>23</b>	START OF TERM 1 - <i>Term 1 Fees Due</i> Years 1 to 11 commence Prep commence, as advised
<b>Tuesday</b>	<b>24</b>	Year 12 Camp (24 <sup>th</sup> to 27 <sup>th</sup> )
<b>Thursday</b>	<b>26</b>	Australia Day Holiday
<b>Tuesday</b>	<b>31</b>	Primary School Swimming Carnival

## February

<b>Wednesday</b>	<b>1</b>	New Parent Orientation Evening
<b>Thursday</b>	<b>2</b>	Senior School Swimming Carnival
<b>Friday</b>	<b>3</b>	Middle School Swimming Carnival
<b>Monday</b>	<b>6</b>	Whole School Assembly P&F Parent Event
<b>Tuesday</b>	<b>7</b>	Friends of Sport Meeting
<b>Wednesday</b>	<b>8</b>	Primary School Meet the Teachers Night
<b>Monday</b>	<b>13</b>	Year 7 Vaccinations
<b>Tuesday</b>	<b>14</b>	Primary School Photos
<b>Wednesday</b>	<b>15</b>	District Swimming Carnival (9-12 years) Middle School Meet the Teachers Night
<b>Thursday</b>	<b>16</b>	District Swimming Carnival (13-19 years)
<b>Saturday</b>	<b>18</b>	Working Bee
<b>Monday</b>	<b>20</b>	Student Leader Induction Service
<b>Tuesday</b>	<b>21</b>	Year 6 SCIPHA Leadership Day
<b>Wednesday</b>	<b>22</b>	Middle & Senior School Photos Year 6 Camp (22 <sup>nd</sup> to 24 <sup>th</sup> ) Senior School Information Night

## March

<b>Monday</b>	<b>6</b>	Year 8 Boy's Camp (6 <sup>th</sup> to 10 <sup>th</sup> )
<b>Tuesday</b>	<b>7</b>	Year 8 Girl's Camp (7 <sup>th</sup> to 10 <sup>th</sup> )
<b>Thursday</b>	<b>9</b>	Primary SCISSA Gala Day One
<b>Saturday</b>	<b>11</b>	Working Bee
<b>Sunday</b>	<b>12</b>	Visiting Japanese Group (12 <sup>th</sup> to 24 <sup>th</sup> )
<b>Tuesday</b>	<b>14</b>	Year 7 Camp (14 <sup>th</sup> to 17 <sup>th</sup> )
<b>Tuesday</b>	<b>21</b>	Primary School Parent/Teacher Interviews
<b>Wednesday</b>	<b>22</b>	Primary School Parent/Teacher Interviews

## April

<b>Monday</b>	<b>3</b>	Vacation Care (3 <sup>rd</sup> to 13 <sup>th</sup> )
<b>Friday</b>	<b>14</b>	Good Friday Holiday
<b>Monday</b>	<b>17</b>	Easter Monday Holiday
<b>Tuesday</b>	<b>18</b>	START OF TERM 2 - <i>Term 2 Fees Due</i>
<b>Monday</b>	<b>24</b>	Primary, Middle & Senior Schools ANZAC Services
<b>Tuesday</b>	<b>25</b>	ANZAC Day Holiday
<b>Wednesday</b>	<b>26</b>	Middle & Senior Parent Teacher Interviews
<b>Thursday</b>	<b>27</b>	Middle & Senior Parent Teacher Interviews

## May

<b>Monday</b>	<b>1</b>	Labour Day Holiday
<b>Tuesday</b>	<b>3</b>	Year 7 Vaccinations
<b>Saturday</b>	<b>6</b>	Working Bee
<b>Monday</b>	<b>8</b>	P&F Parent Event
<b>Tuesday</b>	<b>9</b>	NAPLAN Testing - Years 3, 5, 7 & 9 Year 11 QCS Information Evening
<b>Wednesday</b>	<b>10</b>	NAPLAN Testing - Years 3, 5, 7 & 9
<b>Thursday</b>	<b>11</b>	NAPLAN Testing - Years 3, 5, 7 & 9
<b>Friday</b>	<b>12</b>	NCC Open Day
<b>Thursday</b>	<b>18</b>	District Cross Country (9-19 years)
<b>Friday</b>	<b>19</b>	Middle & Senior School Walkathon
<b>Tuesday</b>	<b>30</b>	Instrumental Music Showcase

## June

<b>Thursday</b>	<b>1</b>	Year 3 Camp (1 <sup>st</sup> to 2 <sup>nd</sup> )
<b>Saturday</b>	<b>3</b>	GCC Normanton Service Trip (3 <sup>rd</sup> to 14 <sup>th</sup> ) Working Bee
<b>Tuesday</b>	<b>6</b>	Year 8 Living Choices Parent Info Night
<b>Thursday</b>	<b>8</b>	Primary SCISSA Gala Day Two
<b>Tuesday</b>	<b>13</b>	QCS Trial Exam (Year 11 & 12)
<b>Wednesday</b>	<b>14</b>	QCS Trial Exam (Year 11 & 12) Athletics Carnival (9-12 years)
<b>Thursday</b>	<b>15</b>	Malawi Service & Mission Trip (15 <sup>th</sup> to 30 <sup>th</sup> ) Middle & Senior Athletics Carnival END OF TERM 2
<b>Friday</b>	<b>16</b>	Japan Tour (16 <sup>th</sup> to 29 <sup>th</sup> ) Nambour Show Holiday
<b>Monday</b>	<b>19</b>	Vacation Care (Jun 19 <sup>th</sup> to Jul 7 <sup>th</sup> )

## July

<b>Monday</b>	<b>10</b>	START OF TERM 3 - <i>Term 3 Fees Due</i> Year 10 Camp (10 <sup>th</sup> to 14 <sup>th</sup> ) Year 12 QCS Prep Wrap-Up Day
<b>Tuesday</b>	<b>11</b>	Year 11 Camp (11 <sup>th</sup> to 14 <sup>th</sup> )
<b>Sunday</b>	<b>23</b>	Visiting Japanese Group (23 <sup>rd</sup> to 5 <sup>th</sup> Aug)
<b>Monday</b>	<b>24</b>	P&F Parent Event
<b>Tuesday</b>	<b>25</b>	Year 10, 2018 Parent Information Night
<b>Wednesday</b>	<b>26</b>	Grandparents Day
<b>Thursday</b>	<b>27</b>	District Track & Field Carnival (9-12 years)

## August

<b>Tuesday</b>	<b>1</b>	Senior School Subject Expo
<b>Monday</b>	<b>7</b>	Year 6 Gifted & Talented Camp (7 <sup>th</sup> to 8 <sup>th</sup> )
<b>Thursday</b>	<b>10</b>	District Track & Field Carnival Day One (13-19 years)
<b>Friday</b>	<b>11</b>	District Track & Field Carnival Day Two (13-19 years)
<b>Saturday</b>	<b>12</b>	Carnival Under the Stars Working Bee
<b>Tuesday</b>	<b>15</b>	Year 12 Uni Information Evening
<b>Friday</b>	<b>18</b>	Junior Primary Sports Day
<b>Tuesday</b>	<b>29</b>	Year 12 QCS Test Day One
<b>Wednesday</b>	<b>30</b>	Year 12 QCS Test Day Two
<b>Thursday</b>	<b>31</b>	Year 5 Camp (Aug 31 <sup>st</sup> to Sep 1 <sup>st</sup> )

## September

<b>Monday</b>	<b>4</b>	Prep Information Night
<b>Thursday</b>	<b>7</b>	SCISSA Primary Gala Day Three
<b>Saturday</b>	<b>9</b>	Working Bee
<b>Monday</b>	<b>11</b>	Year 10 Work Experience Week
<b>Thursday</b>	<b>14</b>	Year 11 Biology Camp (14 <sup>th</sup> to 15 <sup>th</sup> )
<b>Friday</b>	<b>15</b>	Year 12 Fiji Mission Trip (15 <sup>th</sup> to 29 <sup>th</sup> ) END OF TERM 3
<b>Monday</b>	<b>18</b>	Vacation Care (18 <sup>th</sup> to 29 <sup>th</sup> )